

# **2006 Presentation Advancing Cancer Care Through Research**

**Romnee Clark, MD  
Associate Professor of Clinical Medicine  
Indiana University  
School of Medicine**

# 2005: Cancer Surpasses Heart Disease as Leading Cause of Death for All But the Very Elderly in US

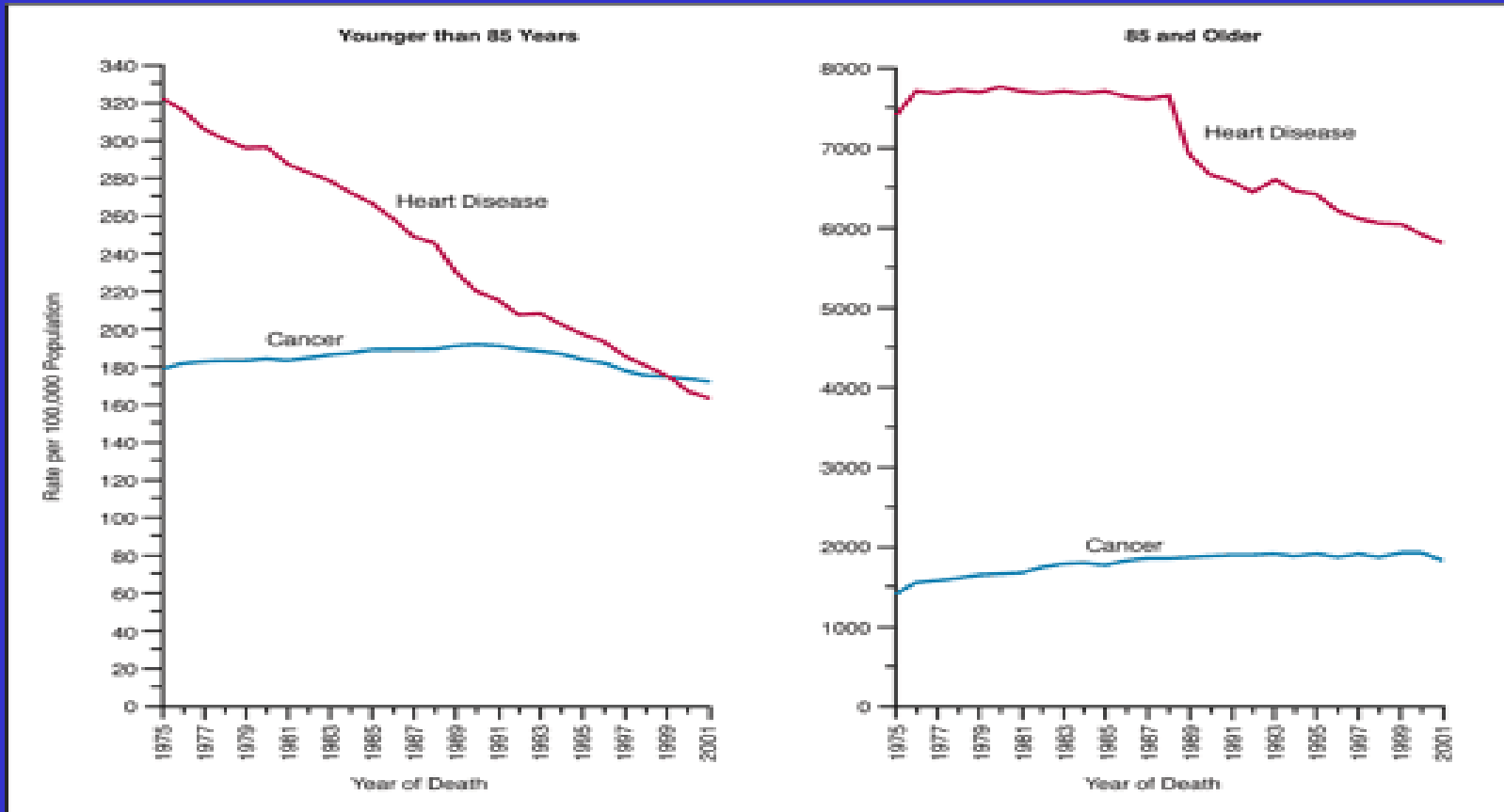


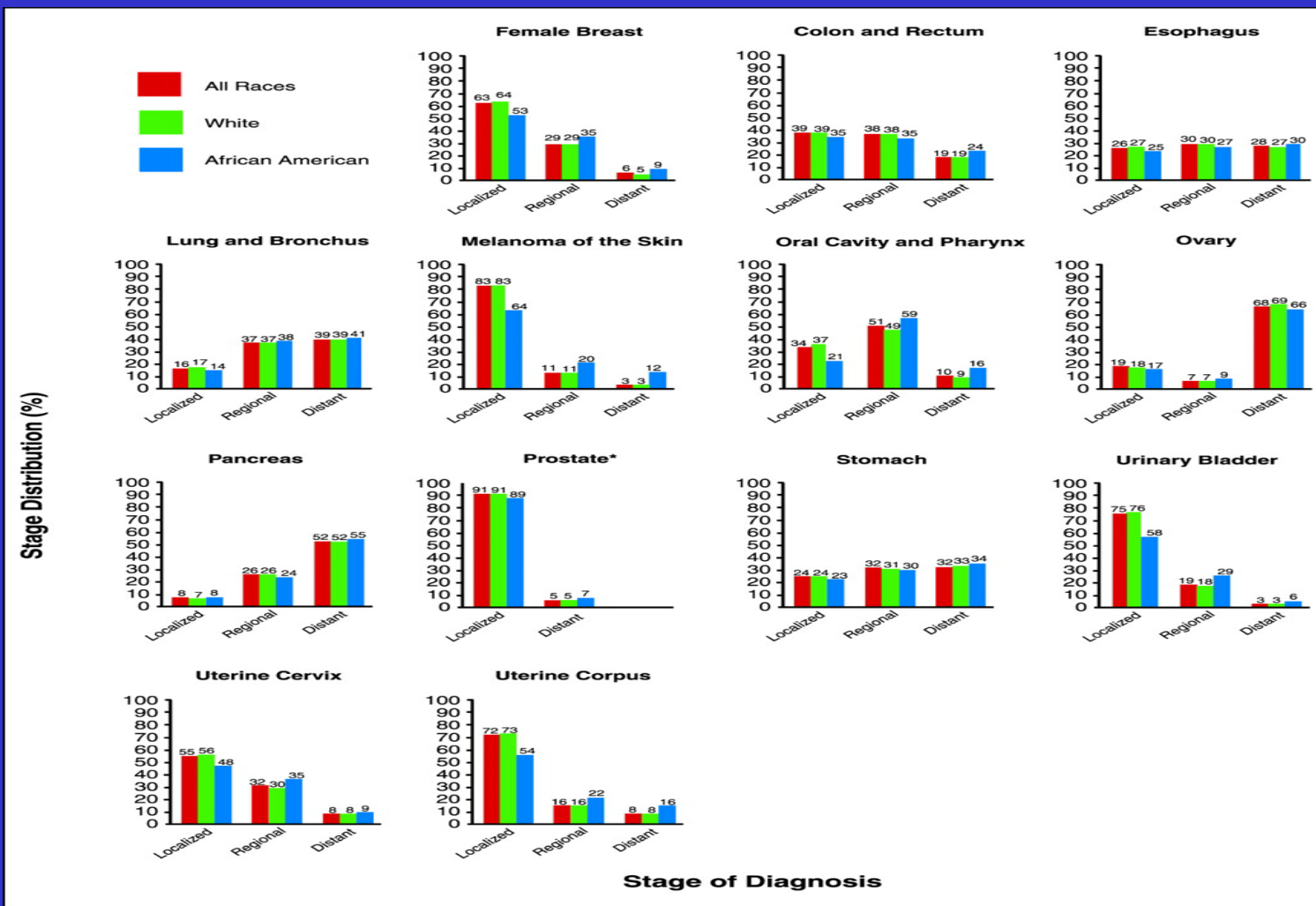
FIGURE 6 Death Rates\* From Cancer and Heart Disease for Ages Younger than 85 and 85 and Older.

\*Rates are age-adjusted to the 2000 US standard population.

Source: US Mortality Public Use Data Tapes, 1960 to 2001, National Center for Health Statistics, Centers for Disease Control and Prevention, 2004.

**2010: Expected to be leading cause of death worldwide**

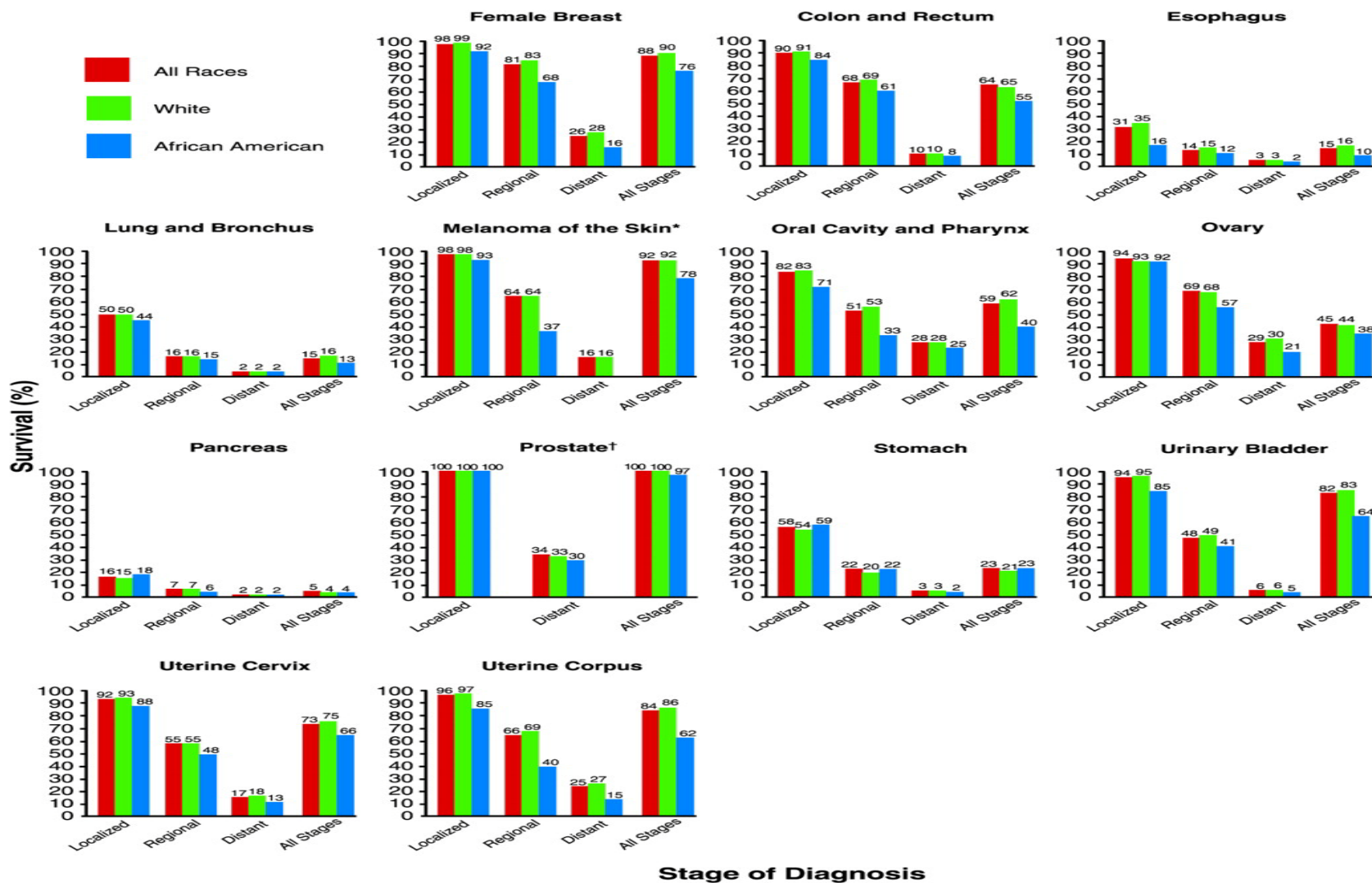
# Race and Cancer Stage at Presentation



From Jemal, A. et al.  
 CA Cancer J Clin 2006;56:106-130.

Knowledge is Power

# Race and 5-Year Survival



From Jemal, A. et al.  
 CA Cancer J Clin 2006;56:106-130.

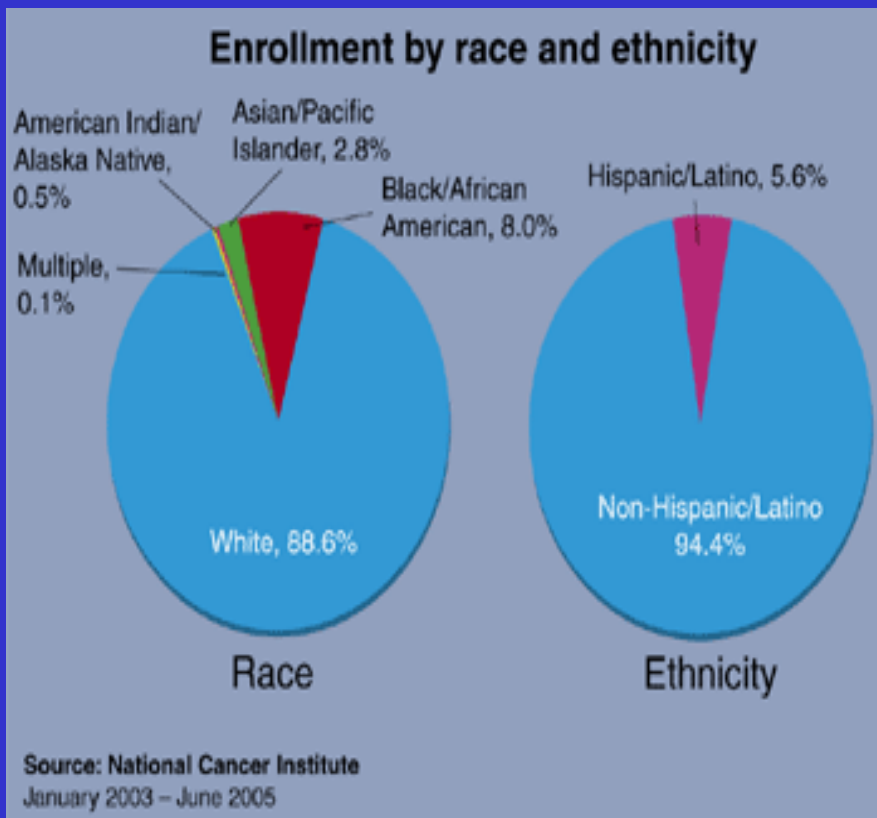
Knowledge is Power

# Advances in Oncology through Research

- ✓ Lesser surgery can be as effective radical surgery
  - ✓ modified radical mastectomy
  - ✓ lumpectomy + radiation
  - ✓ sentinel node biopsy
- ✓ Standard doses chemotherapy increases cure rates in resected cancers of the breast, colon, lung, and pancreas
- ✓ High dose chemotherapy with BMT is :
  - ✓ ineffective in “high risk” and metastatic breast cancer
  - ✓ Effective in relapsed testicular cancer
- ✓ Targeting unique pathways of cellular proliferation in cancer cells improves outcomes
  - ✓ EGFR inhibitors (cetuximab, erlotinib)
  - ✓ VEGF inhibitors (bevacizumab)
  - ✓ Tyrosine kinase inhibitors (imatinib, sunitinib)

# Trial Enrollment

## Rates of Participation



## Perks of Participation

- Active role in own health care
- Early access to cutting edge treatments
- On-study surveillance meets/exceeds standard of care



**INDIANA UNIVERSITY**

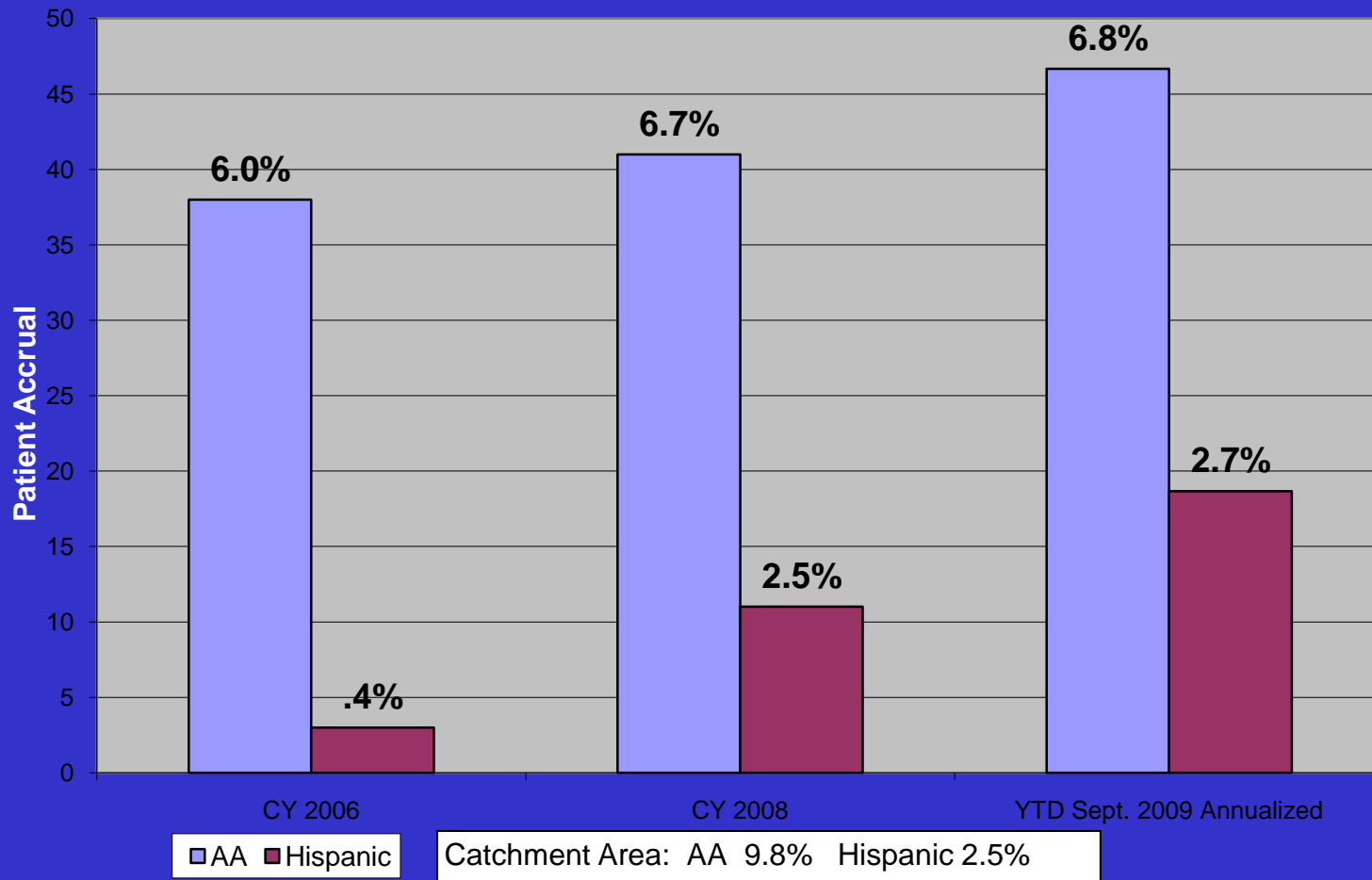
**MELVIN AND BREN SIMON CANCER CENTER**



**2010:**

**Enhancing Minority Research Participation Through  
Community Partnership**

# Minority Accrual at IUSCC



# Multi-Prong Approach

1. Increased research venues:
  - Wishard Special Medicine Clinics
  - Roudebush VAMC
  - Indiana Black Expo (5 yr corporate sponsor)
2. Patient navigator program (PNP)
3. IUSCC Office of Health Disparities and Outreach
4. Community Partner Network

# INShape Black and Minority Health Fair

1. PROGRESS Study (Prostate Cancer Risk Evaluation)
  - Assess the influence of genetic and environmental influences on the development of prostate cancer
  - 147 Specimens collected in 2008
2. Komen Tissue Bank (KTB)
  - Blood and tissue collection from BCA survivors, healthy women
  - 102 Specimens collected in 2008
3. IU CAB
  - Examines the role of over 500 genetic mutations in urologic cancers in survivors and health adults
  - 220 specimens collected in 2009
  - 400 surveys collected to evaluate booth effectiveness, clinical trials perception, why individuals came to the booth, how they heard about study

# IUSCC-Wishard PNP

- Provides newly diagnosed breast cancer patients with one-on-one support as they transition through the health care system, cancer treatments and survivorship
- Provides CT education to improve patient compliance, enhance minority CT enrollment and cancer outcomes
- IUSCC AND IU School of Nursing Collaboration
- IUSON has integrated PNP into their curriculum
- Community Health student nurses taught PNP techniques as well CT rationale
- IUSON provides student nurses and supervisors for Wishard clinics
- PNP to be expanded to other solid malignancies in 2010

# IUSCC Office of Health Disparities and Outreach

## **Program Director:**

Rivienne Shedd-Steele

## **Program Mission:**

To understand, reduce and prevent cancer health disparities in medically underserved populations through community outreach, education and transdisciplinary research

## **Program Goals:**

Coordinate and integrate of cancer prevention, detection and treatment activities through community outreach initiatives

Educate the lay public, patients and caregivers, and healthcare professionals about cancer clinical trials

Decrease health disparities through increase cancer CT participation by minority and medically underserved patients

Knowledge is Power

# IUSCC Community Partner Network

- ✓ 17 community agencies
- ✓ Allows for coordination and integration of IUSCC and community initiatives
- ✓ Venues for clinical staff to introduce and promote clinical advances and studies in oncology
- ✓ Outreach and cancer screening partnering opportunities
- ✓ Evidence based cancer and CT education program development
  - ✓ program evaluation and tracking
- ✓ Assist with the planning of IUSCC lay health cancer conference.
- ✓ Members of IUSCC Community Advisory Board

**IUSCC Community Partner Network**

Indiana Cancer Consortium

Little Red Door Cancer Agency

Indiana State Department of Health

Genessarat Free Clinic

NAACP's Community Health Committee

Asian Help Services

Pink Ribbon Committee

EMBRACE

CIS/NCI

Pink-4-Ever

Sister's Network

Black Nurses Association of Indianapolis, Inc.

Indiana Latino Institute, Inc.

Natl. Center of Excellence in Women's Health

Indiana Minority Health Coalition

American Cancer Society

Marion County Dept. Of Health

# IUSCC Community Partner Highlights

Genessarat Free Clinic (healthcare services to >12K medically underserved and homeless patients)

- Well Women Gatherings
- Cancer Education Programming
- Cancer Clinical Trials Education
- Patient Navigation Partner

Little Red Door Cancer Agency (underserved pop of Marion County)

- Program Planning Committee
- Patient Navigation Partner
- Cancer Research to the Community Partner
- Cancer Clinical Trials Education
- Breast Cancer Education Workshop (2010 )

# PROGRESS Patient Recruitment: IBE 2008 and Beyond!!

